

# Release Version 8/9/15

## Notes on Roadtrek Electrical Simulator

### Disclaimer:

Use at your own risk. The simulator and these notes are not a substitute for professional advice. Damage to your RV could occur if you do not follow the instructions provided by Roadtrek. As an independent owner, the author developed the simulator and this document to help answer questions posed by other owners.

The information provided here is offered, "as is" with no implied warranty as to the accuracy or applicability to any of the Roadtrek vehicles and is intended for educational purposes only.

***Working on the electrical system in a motor home entails risks even with the low voltage wiring. The risks include death, serious injury and property damage. The AC line voltages can kill by inducing cardiac ventricular fibrillation. Lead Acid batteries store tremendous energy and can cause thermal and acid burns. Batteries produce hydrogen gas which can explode. The risk of fire must also be considered with the presence of solid, liquid and gaseous combustible materials. The user must take full responsibility and assess if he or she is qualified to use this information.***

### Background:

The electrical system in your "mobile self contained living unit" is surprisingly complex. There are multiple energy sources and both high and low voltage wiring. It's no wonder lots of folks are confused!

It's my hope that this effort will enlighten both owners and professionals. I know that I've been enlightened! Please let me know what you think and pass on your experiences.

[john@pochiro.com](mailto:john@pochiro.com)

When I first set out to build this simulator, I along with many others thought incorrectly that all of these machines worked about the same way with only minor differences. **Oh how wrong I was!**

The simulator may be found here: <http://metrotrekkers.org/utility/electrical.htm>

8/9/2015 Due to some confusing language in the original text, I have rewritten several parts of this document.

The best way to understand the wiring is to actually look at the simulator and see how it behaves under various conditions and configurations. If you see something you don't understand or think is incorrect, send me an email and I will do my best to answer your question. john@pochiro.com

I've spent a lot of time on this and I'm still not happy with it. Hopefully sometime in the future I will find time and help to completely rewrite the text. Suggestions are welcome.

## Identifying What You Have:

Troubleshooting a complex system with an incorrect picture of what you have is a recipe for frustration. An accurate description of the system as built is critical to resolving any problem you might have. Someone may tell you that this is what you need to do and it may not apply at all to your situation. So be sure you know what you have before you start.

I have not taken on the task of documenting the newer E-Trek electrical systems. I don't own one of these machines and have not had time to do the research. Perhaps at a later date I will take on this challenge.

There are four major configurations excluding the E-Treks, which I believe cover most of the Roadtreks in use today.

Because of the differences, these machines do not all behave in the same way and this can lead to confusion.

## Inverter/Charger or Converter

All RV's have a device which converts 120 volts AC to 12 volts DC to operate the low voltage lights and appliances. In fact with the exception of the Air Conditioner and the Microwave oven, in most cases everything operates off of 12 volts DC.

This is great since when operating off the grid, a simple 12 volt battery can supply the 12 volts needed to operate the lights, exhaust fan and the controls for the heater, refrigerator and water heater.

It's important to distinguish between a **converter**, battery **charger** and **inverter**.

## Chargers

Modern battery **chargers** are designed to quickly charge a battery without damaging it. This is accomplished by operating in several modes as the battery charges up. Typically they have microprocessors which monitor and control the process. Importantly a battery

**charger** is not a **converter** and should not be used alone. A battery charger must be connected to a healthy battery to operate properly. A charger in combination with a battery will provide the needed 12 volt power. It's quite possible to be connected to source of AC mains power with the charger attached and not charge the battery. If your load exceeds the output of the charger, the battery may discharge even though you are connected to AC mains power!

## Converters

A **converter** on the other hand is a simple power supply and while it will charge the batteries at a slow rate, it's is not intended to rapidly charge the battery. It provides all of the 12 volt DC power needed to operate the 12 volt DC devices in the RV. Working properly, you can leave the converter connected to the battery indefinitely and it will maintain the charge on the RV batteries without damage. The converter will work properly without being connected to a battery. However if you connect a battery after it is powered up, it may overload. If you connect the battery before you power up the converter it will normally work properly.

## Charging and Using the Batteries

In normal operation, when we drive to our destination, all of the batteries get charged in route by the engine alternator. If we then plug into AC power, we don't use the battery, so there is no need to rapidly charge the batteries. If AC mains power is not available, we can run off of the batteries. If the batteries become depleted, we can run the engine or the generator to recharge the batteries. In most cases, the engine alternator will charge faster than even the **inverter/charger**. The converter won't charge very fast and it's probably pointless to try and charge the batteries using the generator. If you have the **inverter/charger** and it is configured at a high charge rate, then the combination of the generator and the charger might compare well with running the vehicle engine.

Solar panels are also an option, but it will take both sunlight and time. A 250 watt very large solar panel in full sun will charge at a fraction of the rate possible with the engine alternator. Replacing  $\frac{1}{2}$  the charge in two 100 amp-hour batteries would require more than 4 hours of full sun. Solar panels are great for keeping batteries charged while in storage, but might not keep up while boondocking.

## Inverters

Sometimes we would like to operate 120 volt AC appliances when AC mains power is not available and don't need or want the power of the generator. This can be accomplished with a device called an **inverter**. The inverter uses the 12 volt DC battery voltage to produce 120 volts AC. In most cases, inverters are used to operate low power electronics like laptop computers and entertainment equipment. Operating a microwave or an air conditioner is well beyond the ability of the batteries and inverters found in most RVs. The E-Trek is a notable exception with a very large inverter and a 3 or 4 times the number of batteries normally found in an RV. Inverters require power even when not being used, so you should only have them on when you are actually using them.

## Inverter/Chargers

Around 2005, Roadtrek began using the Trip-Lite combination ***inverter/charger*** unit which combined the inverter and charger into one package. In operation, the device is either a charger or an inverter and not both. The charger function is designed as a multi-rate device and can charge the batteries at a high rate. The Trip-Lite is a sophisticated device. The manual covers the various options. Don't change the dip-switch settings unless you are sure you know what you are doing!

## Converters / Inverters / Chargers found on Roadtreks

Older Roadtreks used a ***converter*** to convert 120 volt AC into 12 volt DC. Many of these older units had independent ***inverters*** which converted 12 volts DC into 120 volts AC to operate accessories like video and audio equipment.

## Important Operational Note

Many Roadtreks have a warning sticker which instructs you to first turn on the battery switch before connecting to AC mains power.

The reason for this is that both the ***inverter/charger*** and the ***converter*** may operate improperly if connected to a battery ***after*** AC mains power is applied. In the case of the ***inverter/charger***, the output will always be unstable if a battery is not connected. The ***converter*** output may become unstable if connected to a discharged battery after power is applied.

For purposes of the following discussion, the term ***inverter/charger*** can be substituted for ***converter***. The simulator does not model a ***converter***.

## Isolator or Separator

***Battery isolators*** and ***battery separators*** come into play when the batteries are being charged. When charging is taking place, the devices allow all the batteries to be charged from the alternator. When not beginning charged, the batteries are isolated or separated from each other.

This isolation or separation protects the vehicle battery from discharge due to a load in the RV and protects the RV batteries from excessive current demanded by the starter.

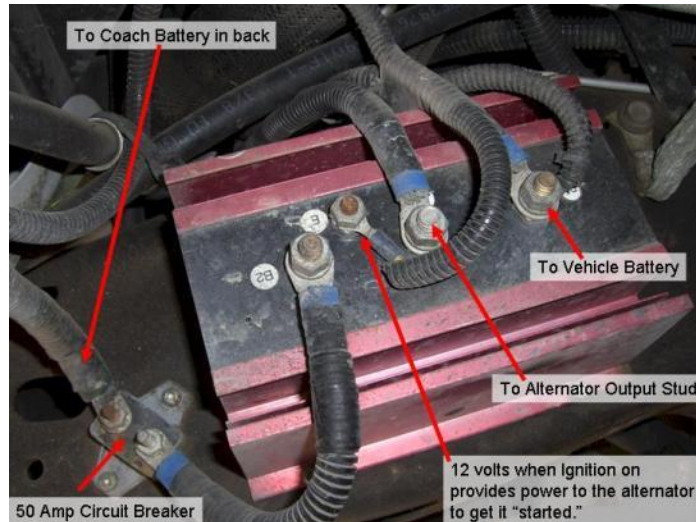
A ***battery isolator*** has the disadvantage that it will not allow the ***inverter/charger*** to charge the vehicle battery. A ***battery separator*** will allow the ***inverter/charger*** to charge both the vehicle battery and the RV batteries. This normally only a factor when the vehicle is in storage.

A ***battery isolator*** requires no power when idle. A ***battery separator*** draws a small amount of power even when idle.

Roadtrek started switching from **battery isolators** to **battery separators** around 2006-2007. Most if not all Sprinters are equipped with **battery separators**. More recent vehicles will have **battery separators**.

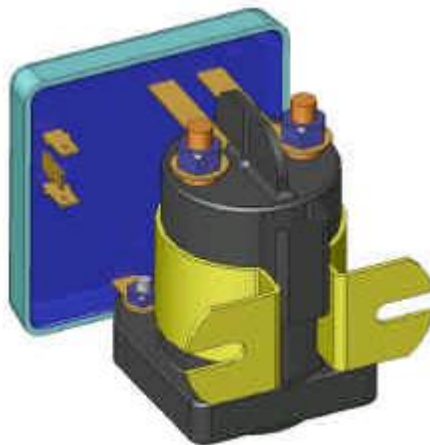
You should know which of these devices you have on your vehicle. A look at the owner's manual under "Appliance & Accessory Manufacturer's Log" should list one or the other. If you have a vehicle built in the transition years, you might want to make a visual inspection. Most vehicles built after about 2007 have **battery separators**.

Here is a picture of a typical **battery isolator**:



**Battery isolators** are located in various places, but are commonly found bolted to a frame member under the front of the vehicle. They will be close to the alternator and vehicle battery and have very heavy wires making the connections.

A **battery separator** looks like this:



On most vehicles, the **battery separator** is located on the firewall on the driver side of the engine compartment and is clearly visible when you open the hood.

## Wiring Differences

In the older configurations, the **inverter/charger** is connected directly to the 12 volt fuse panel and loads. When the disconnect switch is open or off, the battery is **not** connected to the **inverter/charger**.

This means that when the **battery disconnect switch** is in the off position, the battery will be completely disconnected from any loads and the vehicle could be stored for long periods of time without draining the RV battery.

The obvious operational characteristic is that the 12 volt panel will be powered when plugged into AC mains power, regardless of whether the **battery disconnect switch** is on or off.

Another not so obvious characteristic for units equipped with a Trip-Lite **Inverter/Charger** is that you may notice the flickering light symptom if the battery disconnect is off. Please note that other conditions can cause this symptom and they are described elsewhere in this document.

On the simulator model/year drop down selector, this above configuration is labeled, **direct**.

In the 2006-2007 time period, Roadtrek began implementing a wiring change. Rather than connecting the **inverter/charger** directly to the 12 volt fuse panel and loads, it was connected to the battery bypassing the **battery disconnect switch**. The **battery disconnect switch** now disconnects the 12 volt panel and loads from the battery and the **inverter/charger**.

The obvious operational characteristic is that the 12 volt panel will be powered only when the **battery disconnect switch** is on even if plugged into AC mains power.

The not so obvious operational characteristic is that the inverter will operate even if the **battery disconnect switch** is off. Many owners have run down their RV battery because they left the inverter switch on.

The wiring change was prompted by several factors. The transition to the Trip-Lite inverter created an unexpected problem because the old wiring was not compatible with the Trip-Lite. Unlike the converter / charger used in the past, the Trip-Lite will not operate correctly unless it is connected to a battery. Users would have the battery switch off and then plug in to AC mains power. The lights would flicker creating complaints.

The second reason for the change was to make it possible to charge all of the batteries including the vehicle battery when the unit is plugged into AC mains power regardless of the state of the battery disconnect. This is possible because of the use of the **battery separator** rather than the **battery isolator**.

The switch to the battery separator was driven in part by the problem of the vehicle batteries discharging while idle due to phantom loads. Vehicle computers and

accessories draw power even when the vehicle is off, causing the vehicle battery to run down. With a battery separator and the wiring change, a user could simply plug the unit into AC mains power and keep all of the batteries charged when not in use.

On the simulator model/year drop down selector, this configuration is labeled **bypass configuration**.

On all Roadtreks, when the vehicle engine is running, all of the batteries, both the vehicle and the RV deep cycle batteries charge. This is **independent** of the battery disconnect switch and the wiring configurations described above.

If you are not sure which version of the wiring you have, perform the following test: With the vehicle disconnected from AC mains power and the generator not running, operate the battery disconnect. The interior lights should operate when the switch is in the on position. Turn the battery switch off and note that the interior lights not will operate.

Plug vehicle into AC mains power and see if the interior lights will operate without touching the **battery disconnect switch**. If they will operate then you have the older direct configuration rather than the newer bypass configuration.

### **Simulator Operation:**

To operate the simulator, use the drop down box labeled **Model/Year** to select your configuration. The first time you use the selector, you will get a warning message. The first four options allow you to select based on the above questions. The other options attempt to answer the questions for you based on the model and year. This is not completely reliable, particularly in the transition years.

Some of the buttons are “momentary” which means that mechanically they don’t stay in the same position when activated. The battery disconnect switch has two momentary positions “ON” and “OFF.” Note that if you hold either the “ON” or “OFF” button down too long, you will get a warning about overheating the coil. The inverter switch on the other hand is a bi-stable switch and remains in the position you last left it.

More recent machines have a single pushbutton to control the disconnect switch and it “toggles” on or off when you push the button. I’ve not included this behavior in the simulator, but the rest of the operation is the same.

The best way to learn how to use the simulator is to push the buttons and see if it behaves as you expect. Be careful, some of this is not intuitive, so you might think there is an error, when in fact it’s working correctly. It is possible that there is an error, but keep in mind that you must select the proper configuration. If you find a bug, please let me know and I will get it fixed.

The simulator uses the JavaScript programming language. This is part of most browsers and it works on variety of computers. It has been tested on IE, Firefox and Safari. It is possible to run it standalone on your computer without being connected to the Internet.

Instructions on how to do this may be found here:  
<http://www.metrotrekkers.org/utility/local.htm>

## Voltage Readings

Voltage readings displayed on the simulator are not absolute and actual conditions will vary greatly. Temperature, battery age, battery type, loads or charging current all impact the result.

The simulator does not attempt to model the "surface" charge effect. After charging for a short time, a battery will show a higher voltage, which is not representative of the state of charge. To illustrate the drop in apparent battery voltage under load, the simulator displays a slightly lower voltage when the battery disconnect is closed. Again just an indication of the type of changes one would expect and not an absolute value.

## Simulator Components:

The simulator has most of the normal Roadtrek electrical elements and they interact much as they do in the actual environment. Again, this is a "functional" simulator with limited accuracy.



## Battery Condition Display

Roadtreks have a monitor panel with a battery condition function. When you push and hold the test button, the display will show the battery condition as well as the levels for the LP gas, fresh water and holding tanks. The battery condition lights display the current battery voltage. This may or may not be representative of the battery condition. The "C" light will be on if the voltage is above about 12.7 volts, the "G" light comes on at about 12 volts, the "F" light comes on at about 11.3 volts. The "L" light will come on with less than 5 volts. This means the battery has some charge, but does not tell you much more.

With an accurate volt-meter and allowing the battery to sit without charging or discharging for a time, you can assess the state of charge of a battery. This display does not give that level of detail. With a good fully charged battery and not much load, the "C" will often display even when charging is not taking place. This is particularly true if you have been charging the battery and have recently stopped. The "surface charge" will take some time to dissipate if there is very little load on the battery. I did not attempt to show this behavior on the simulator so it won't show "C" unless charging is taking place.

Note that while charging, the display should always show "C" regardless of the condition of the battery. Let me repeat, when charging, it tells you nothing about the state of charge of the battery.

Just like the actual panel, you have to hold down the button for the display to work. Depending on the configuration, it may or may not work with AC mains power connected and the battery disconnect in the off state. Vehicles with the direct connection will display



the converter voltage instead of the battery voltage when connected to AC mains power with the battery disconnect turned off.

## Alternator

The alternator, driven by the vehicle engine, produces power to charge, not only the normal vehicle battery, but also the RV battery. A moderate drive should be enough to charge the all of the batteries under normal conditions.



Note that with “isolator equipped” vehicles, the alternator connections are NOT the same as a standard vehicle. The Roadtrek factory modified the production vehicle wiring to accommodate the isolator. These changes often confuse auto mechanics who work on automotive electrical systems. More than one battery and or alternator have been replaced, when in fact the problem was the isolator. The "output" terminal of the alternator will have voltage present and produce current when the engine is running. With the engine and ignition off, the "output" terminal should have no voltage present. The voltage present at the alternator terminal will be noticeably greater than the vehicle battery voltage. This is normal, but again may alarm the technician not familiar with “isolator equipped” vehicles.

Use caution, because modern digital voltmeters do not “load” the circuit and it’s easy to misinterpret readings. You may for example read an apparently low voltage on the alternator stud which is due to the tiny diode leakage current. This is perfectly normal behavior.

“Separator equipped” vehicles will have changes, but will operate very similar to unmodified vehicles.

## Vehicle Battery

The vehicle battery is a standard automotive type and is used to "start" the vehicle and operate accessories when the engine is not running. This type of battery is not designed to be "deep cycled," but rather is intended to deliver large amounts of current to the starter for short durations.

In “isolator equipped” vehicles, the battery is connected to the alternator via the isolator, which allows both the RV battery and vehicle battery to charge whenever the alternator is active.



In “separator equipped” vehicles, the vehicle battery is connected directly to the alternator and to the RV battery via the separator which connects the batteries together whenever the voltages present on either battery indicates charging is taking place.

Both the separator and isolator protect the respective batteries from damage by separating or isolating the batteries from each other in operation, but allowing them to be charged when external power is available.

## RV battery

The RV battery or batteries are special "deep cycle" types and are designed to be deeply discharged and charged repeatedly. They are not intended to deliver the high current required by the engine starter.

The simulator has an *RV Battery State dropdown* box. You can set the battery state to *FULL*, *POOR* or *DEAD*. Note that if the simulator detects that the battery is "charging" the battery state will automatically change from *DEAD* to *POOR*.

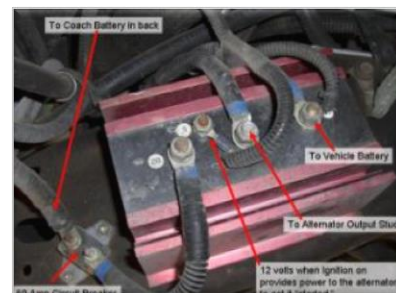


Deep cycle batteries always have bolt on connections with wing nuts, which distinguish them from common automotive batteries.

What type of battery to use is can be a contentious discussion. The various types all have some advantages over another. The common flooded electrolyte batteries are the least expensive and if maintained properly will last a long time. Any battery if abused will have a shorter life than one properly maintained and operated.

## Isolator

The isolator has one role and that is to allow the alternator to "charge" the RV battery, but at the same time not allow a light or some other load in the RV to drain the vehicle battery. It does this by allowing current to flow from the "A" terminal to either the "B1" or "B2" terminals, but not in reverse. This is accomplished, with some high current diodes. Current can flow from the alternator to both batteries, but current cannot flow from the vehicle battery to loads in the RV. The same is true in reverse, should you leave the vehicle headlights on, the RV battery will not get drained.



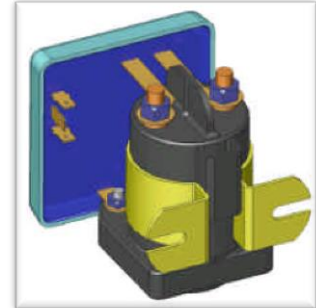
There is another terminal on some isolators. This is required because many alternators need power to start working. When the ignition switch is "on," 12 volts is present on this terminal. Inside the isolator, a diode connected such that the A terminal will have power. In the normal automotive configuration, the alternator output is directly connected to the battery.

Note that the alternator voltage is higher than either battery voltage when the engine is running. This is due to the natural voltage drop across the high current diode in the isolator. Since the vehicle voltage regulator senses the battery voltage, the regulator calls for slightly more than the normal voltage from the alternator to compensate.

The high current diodes will have some voltage drop when current is flowing through them. If the batteries were identical and at an identical state of charge then under charging conditions, the voltage at battery terminals "B1" and "B2" should be very similar. This condition would rarely be the case in practice. A more likely situation is one where one battery is at a much lower state of charge than the other. The voltage at the vehicle battery is used to control the output of the alternator and if the battery is low, then the voltage drop across the diode feeding the vehicle battery will be larger. The user then may see a higher than normal voltage on the RV battery since there will be less voltage drop across that diode due to the lower current. Again the actual readings may not seem to make sense, but in fact be quite normal.

## Battery Separator

The Separator, like the isolator allows the alternator to "charge" the RV battery, but at the same time not allow a light or some other load in the RV to drain the vehicle battery. It will also allow the **inverter/charger** in the RV to charge the vehicle battery. It does this by monitoring the voltage on both batteries, if either battery voltage is 13.2 volts or higher for more than a few seconds, the separator, connects the batteries together. Should the voltage fall below 13.2 volts for more than a few seconds, it will disconnect the batteries.



Unlike the **isolator**, the **battery separator** is a mechanical switch and there should be little if any apparent voltage-drop between the terminals when active.

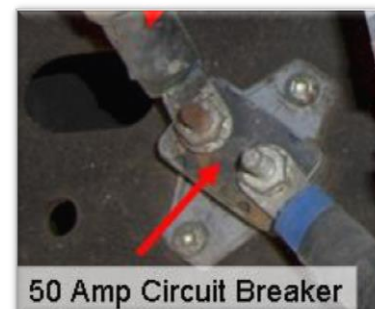
In separator equipped RVs, the alternator is connected directly to the battery and the alternator output stud will show voltage even if the vehicle is turned off.

Interestingly, the battery separator consumes a significant amount of power when active. The case will become noticeably warm in operation. This is not a problem since when active; you have a source of power other than the batteries.

## Automatic Resetting Circuit Breakers

In the diagram there are three components labeled "CB" with either 50A or 30A labels. These devices *are circuit breakers* which will open the circuit should there be more than the rated current flow in the circuit. They are thermally operated and after a period of cooling they automatically reset. More recent vehicles have higher current rated circuit breakers.

You may wonder why there are two circuit breakers in a series connection. This is because there are power sources at both the front and back of the vehicle. A short circuit will draw current from both sources, so protection near each source provides protection. The batteries, alternator and converter/charger can deliver tremendous current and circuit protection devices are a necessity.



The third circuit breaker protects the converter/charger. There are three sources of power driving the same conductor. Again a protection device is needed to remove this source of power should a short circuit arise.

## **Onan Generator**

The system has a 2.8KW generator which produces 120 volts AC. The generator is directly connected to the RV battery and has a remote control panel to start and stop the unit. If the RV battery has enough charge, it will start the generator regardless of any other conditions in the vehicle.

In the simulator, the current to the generator starter is shown when the battery has some charge and the start button pushed, but the generator won't start if the battery condition is poor.

When running, the simulator changes the color of the generator from blue to green and a message appears above the block indicating the status.

The generator uses the RV battery for starting and control. The generator has a very low current charger and when running will produce a small amount of current to charge the battery. It produces 1 amp maximum. However when the generator produces 120 volts it will charge the battery at a high rate due to the operation of the converter/charger using AC mains power provided by the generator. Depending on the configuration, the battery may or may not charge based on the battery disconnect state. Prior to the introduction of the Tripp-Lite converter/charger, the converter charger would not charge the battery very fast. The Tripp-Lite is a much more sophisticated variable rate charger and can charge at a much higher rate. Running the vehicle engine is the fastest way to charge a depleted RV battery. Running the engine for 30 minutes will make a significant difference in the condition of the RV battery. Note that if the RV battery is extremely low, you may demand more current than the circuit breakers will allow during the initial charging. For the best battery life, one should never discharge the batteries completely.

## **Automatic Transfer Switch**

The generator AC output connects to the RV 120 volt electrical system via an electrically operated switch. When the generator voltage comes up, it will operate this switch after a short delay, connecting the generator output to the RV systems. This delay protects system components from the unstable generator output during startup. The voltage and frequency varies widely at startup. Note that when the generator is not running, the RV electrical panel connects to the AC mains power cord. The transfer switch prevents feeding power back into the AC mains power connector and utility grid.

## **Cord for AC mains Power Connection**

The simulator has provision for the user to indicate if the RV is connected to a source of AC mains power. When connected, AC mains power is available to the system. Note that the generator output controls the automatic transfer switch, so even if AC mains power is available, if the generator is running, it carries the load. When connected to AC

mains power, the "connection" appears and the wires turn red indicating the presence of voltage.

## **RV 120 Volt AC Fuse Panel and Loads**

This block represents the RV AC electrical system and changes green when AC mains power is available either from the generator or AC mains power.

## **120 volt to 12 volt Inverter/Charger Converter**

Roadtreks built before about 2005 have a **converter** which converts the 120AC to 12 volts to run the various 12 volt accessories. Some have a separate inverter to run a TV or VCR. Roadtreks built after about 2005 have the Tripp-Lite combination Inverter / Charger. The Inverter part of the block will produce a limited amount of 120volt power (750watts) using the battery as an energy source. This Inverter is connected to the 120 volt outlets in the galley and the entertainment closet. When external power is available, either from the generator or AC mains power, these outlets connect directly to that source. Depending on the settings on the Trip-Lite, the maximum load may be limited due to the charger demand. Consult the Trip-Lite manual for details.

The inverter behavior under low voltage and the presence of AC mains power is modeled in the simulator. If the battery condition is **POOR**, the inverter will not operate. When external power is available, the inverter is inactive. With a **FULL** battery and no external power, the inverter will operate. Note that when it's on, it draws some current from the battery. The inverter has a "load" detection function which can automatically turn the inverter on should a load be present. I've not modeled this feature.

When connected to external power or a battery with some charge, the low voltage DC wires turn red indicating the presence of DC voltage.

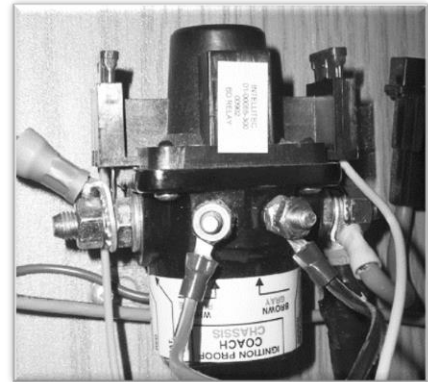
If AC mains power is connected with the battery disconnected, the **inverter/charger** will supply power and the low voltage loads will work if you have the direct connection configuration. Note that the **inverter/charger** may be unstable and the lights may flicker due to the "no battery connected condition." You should not operate the system in this way.

If you have the direct connection configuration and connect AC mains power without turning on the battery disconnect first, it may demand more current than the converter can provide when you turn on the battery disconnect. A warning message will appear under this condition. This condition can be avoided by switching the battery "on" before attaching AC mains power or turning on the generator.

Note that the battery disconnect is "powered" from the RV battery and if the battery is dead, you cannot operate the switch. Starting the vehicle will charge the battery a bit changing the RV battery state from "DEAD" to "POOR."

## Battery Disconnect

This is a curious device. Unlike a typical relay, it only needs power to open or close. The relay "latches" in the on or off state. The simulator shows the four possible states. The coil is energized to close the switch, in this case, the coil pulls the armature in and a permanent magnet above is "attracted" to the coil, when the power is released the magnet prevents the armature from moving back.



To "open" the relay, you reverse the connections to the coil and this deflects the magnet away from the armature. When the coil is de-energized, the armature can move and the circuit is broken. Note that if you "push" and "hold" the rocker switch in the "off" position, the battery disconnect is closed while you hold the switch down.

***Holding the on or off button on the monitor panel down for more than a brief period can overheat the battery disconnect and damage the device.***

As of this revision, Roadtrek has begun using a new type of disconnect which works a little differently. This device has one momentary, pushbutton switch and the disconnect cycles from on to off when depressed.

## Vehicle Battery Leakage Current

In recent years, the GM vehicles have much higher battery demand when not in use. This has drastically shortened the time the vehicle can be stored before the vehicle battery runs down. A certain amount of current is required to retain the memory contents of the engine control computer in addition to the normal "self discharge" characteristic of Lead Acid batteries. Older vehicles drew about 12 milliamps when idle and can easily be started after 5 or more weeks of inactivity. Anecdotal reports from others who have measured the idle current demand for more recent GM vehicles is about 5 times that amount or about 60 milliamps. The idle time possible has been reduced to about a week. GM seems to think this does not matter since most of these vans are in commercial service and don't sit idle.

Roadtrek addressed the problem of the vehicle battery going dead while parked by replacing the isolator with a battery separator. The isolator allowed the vehicle alternator to charge the RV battery whenever the vehicle was driven, but did not provide for charging the vehicle battery when connected to AC mains power or running the generator. The battery separator accomplishes this by connecting both batteries together

whenever the voltage on either the vehicle battery or the RV battery exceeds about 13 volts indicating that charging is taking place.

Oddly enough all is not free, the battery separator typically draws about 10ma while idle increasing the load. It's not clear from the documentation which battery carries the load, but I suspect it's probably whichever one has the higher voltage. I'm of the opinion that with the older vehicles the isolator is probably a better choice since it does not add to the leakage problem.

### **Summary:**

So, in summary there are 4 configurations covered by the simulator:

- Isolator equipped with converter directly connected to 12 volt loads
- Separator equipped with converter directly connected to 12 volt loads
- Isolator equipped with converters which bypass the battery disconnect.
- Separator equipped with converters which bypass the battery disconnect.

This is a "work-in-progress" and there are very likely a few bugs and it may not work correctly.

Finally, it is a basic "functional" simulator and does not model real detail. Beyond the states of the various switches and a dead, poor and fully charged battery, it does not understand other conditions.

### **Troubleshooting Tips and Common Questions**

Here are a number of situations and possible solutions. Remember a set of symptoms is just that a set of symptoms and the actual cause may not be the same as the one described.

#### ***The generator dies as soon as I release the starter switch.***

The generator has an oil level interlock which will inhibit the ignition when the oil is low. So check the oil level first. While you hold the starter switch down, the generator fuel pump and ignition lockout are powered from the battery. When the switch is released, the controls are running off the generator output. There are several things which can create this problem including the control board, regulator board and dirty slip rings. The Onan service manual which can be found on the Onan website has a troubleshooting guide which is very helpful.

I learned recently that Onan has stopped using the oil level sensor on more recent models due to the inability to get a reliable unit.

You can tell if the engine "fires" when holding the start button down. If it fires then the oil level sensor is not at fault.



### ***The generator won't start***

The fuel pickup in the gas tank is set high to keep you from running your vehicle tank completely empty. So if the fuel level is low, the generator won't run.

It takes a fair amount of current to operate the generator starter, if the RV battery is weak it may not have enough reserve capacity to run the starter. Starting the vehicle will provide extra current via the isolator or separator.

### ***The generator runs rough and surges***

Unfortunately this is often indicative of a generator which has not been run and deposits have built up in the carburetor. There is a lot of anecdotal discussion about various fuel additives to resolve the problem. In the end it may require replacement of the carburetor.

### ***Where can I find more information about the generator?***

At the time of this writing 12/16/2012 these documents were available on the internet.

<http://www.cumminsonan.com/www/pdf/manuals/981-0153.pdf> Owner's Manual

<http://www.cumminsonan.com/www/pdf/manuals/981-0518E.pdf> Service Manual

<http://www.flightsystems.com/pdf/onanrvtshootgd608.pdf> Troubleshooting Guide

Be careful, there are several versions of the basic KV series of Microlite models and it's necessary to consult the nameplate to figure out exactly which version you have.

### ***My generator runs on propane, do I have to exercise it?***

Obviously varnish buildup will not be a problem, but the generator slip rings are copper and they will tarnish, running the generator will keep them clean. Also moisture can build up in the generator and running it under load will dry out the equipment. Finally you really want to know it's going to work when you need it, so regular exercise is a great practice.

### ***How long should I exercise the generator?***

Onan recommends 2 hours at half the rated load every month. An electric heater makes a nice load. Most of the small heaters are between 1000 and 1500 watts.

### ***After stopping for a time with the refrigerator on DC, the vehicle battery has run down.***

The refrigerator when running on DC requires a lot of current. This mode of operation is really only intended when you are traveling and can't run it on propane. This is a very heavy load and will quickly drain the RV battery.

The isolator or separator should protect the vehicle battery from discharge if the refrigerator is left on. If this happens, the system is not operating correctly. Someone



may have bypassed the device isolator effectively connecting both the RV battery and the vehicle battery together. This was probably a forgotten temporary repair. Isolators do fail and more often than not fail in the open condition, which prevents one or both batteries from charging.

***My machine is possessed; the RV lights will be on and suddenly go out only to come back on again.***

The devices in your machine can demand a lot of current. The wires connecting these devices to the battery have to carry the current. If you have corrosion on the battery terminals this can create a “fuse” or a poor connection which will open under high current turning off the lights. This broken connection will often “heal” and then the process may repeat erratically. If the battery is low and the vehicle is connected to AC mains power or the generator, it may behave also behave erratically when this happens. A bad battery can have intermittent internal connections, but this is less common. A poor connection can happen anywhere, but will most likely occur at the battery due to the corrosive conditions at the battery. The circuit breaker between the converter charger and the battery can fail or become intermittent and create the flickering light symptom.

***The lights vary from dim to very bright while running on AC mains power.***

The converter/charger may not operate properly unless connected to a battery. The *Trip-Lite units will not operate properly unless connected to a battery*. If you have the bypass configuration, the converter is always connected to the RV battery and by extension of the separator to the vehicle battery. Combinations of problems with poor connection or intermittent circuit breakers can be very daunting. The “no battery connected condition” can occur due to any number of problems and make ***inverter/charger*** unstable. The older ***converters*** can shut down due to over current if you plug in first and then switch on the battery in directly connected configurations. This usually happens if the RV battery is very low and demands a lot of current when you make the connection. If the battery is charged, it does not demand much current and you won't notice a problem.

The Trip-Lite ***inverter/chargers*** are complex devices and you should read the manual carefully. If set for high charge rate, they can deliver as much as 50 amps. Some of the older rigs have 30 amp circuit breakers between the Trip-Lite and the battery, under this condition the circuit breaker can open creating the “no battery” conditions and the dreaded flickering lights.

You should always turn on the battery switch before connecting to AC mains power or starting the generator. If the 12-volt lights don't work when you do this you have a problem which needs to be corrected.

***Everything is great until I stop and hook up. After awhile the lights go dim. The only way to get them back is to start the engine.***

When you are connected into AC mains power, you should be running off the ***inverter/charger*** and the battery should be charging. The monitor panel should show “C.” If the converter charger is not operating, you are running off the RV battery even

though you are plugged in. First, make sure you have AC mains power. Check the microwave display. If that's okay, then check the AC mains circuit breakers by cycling them on and off. If that does not solve the problem then the inverter charger is not working and needs to be checked out.

***The mechanic replaced both the alternator and the battery, but the battery still runs down.***

In an isolator equipped vehicle the charging current must travel through the isolator. If the isolator is bad, the battery won't charge. The output of the alternator will show a higher than normal voltage because of the voltage drop across the diode in the isolator. This is normal. In addition, there may be some additional circuitry unique to an isolator equipped vehicle needed to "start" the alternator. If this circuitry is not working correctly, the alternator won't work. The schematic in the Roadtrek owner's manual covers these connections. Show this to the mechanic.

***The vehicle battery runs down in only a week, is this normal?***

GM thinks it's normal. The newer vehicles draw 5 times the previous idle current to keep the accessories alive which limits the standing time to about a week. With a "separator equipped" vehicle, you can just leave it plugged in and that will solve the problem. Be sure to have the battery switch in the on position if you have the direct connection.

If you don't have a separator, then all you can do is start the vehicle once a week or add a battery charger. You could add a battery switch, but the vehicle will forget all the learned engine settings and it will run poorly until it relearns the proper settings. A real bummer!

***I was told not to leave the vehicle plugged in when not in use***

If the battery charger is working properly, the batteries will not be damaged by leaving the vehicle plugged in. In fact the batteries will be damaged if you allow the batteries to run down completely. Completely discharged batteries will freeze in cold weather and the case can crack. A malfunctioning charger can overcharge the battery and "boil" out the electrolyte, but this is abnormal and should be corrected immediately.

***The RV battery is new, but when I dry camp, the battery runs down too fast.***

Think "green," if you turn on all the interior lights and run the exhaust fan on full tilt, you will not get as much run time as you will if you conserve.

The Interstate battery website says that for a group 27M battery you can run for 17 hours at a 5 amp load. 5 amps at 12 volts is only 60 watts. That's not much when you consider the output of a typical 100 watt light bulb. This is of course the reason many rigs have two batteries, but that only doubles the low starting number.

***I can plug in and the lights work, but it won't work on battery, I think the battery disconnect is bad.***

It could be a bad disconnect, but you need to check a few things first. When you operate the switch, you should hear a “clunk” sound from the disconnect switch. If it does not make any noise, then be sure it’s getting power. There are two fuses on the disconnect switch, the one on the battery side provides power to the disconnect switch control circuit. The monitor panel has the battery on/off control switch and these do fail. With a known good test light or DVM, check for voltage across the disconnect coil while an assistant clicks the switch. If the disconnect has been overheated, the mechanism may be bound up due to the heat.

### ***Will a solar panel solve my dry camping run-time problem?***

A solar panel will help, but you will still have to conserve. It takes a big panel to produce a 100 watts and it only produces that level in full sun. If you get 4 hours of full sun, that about 0.4 kilowatt-hours. Running your vehicle for 30 minutes can easily produce that much energy. I’d spend my money on LED lights before I added solar panels. It’s interesting that the separator draws power and I suspect if one implemented a solar charger, you would want to keep the separator from activating and using up precious watts!

### ***The Battery Warning Light Came on suddenly, while driving***

Normally this means a bad alternator, broken or slipping fan belt. However, in an “isolator equipped” vehicle, this can also happen when the isolator fails. The alternator output must flow through the isolator and then to the batteries.

If the path between the isolator and the vehicle battery no longer functions, you will get this light. Don’t delay getting it fixed, because the alternator may be producing excessive voltage and overcharge the coach battery. This can quickly damage the batteries because the electrolyte can literally boil away. This happens because the alternator senses the low vehicle battery voltage and thinks it’s not working hard enough and cranks up the output.

An emergency workaround is to use a heavy jumper and bypass the isolator connecting the alternator output directly to the vehicle battery. This requires a hefty jumper, because the current can be more than 100 amps. You should promptly get the isolator replaced.

### ***How do I diagnose the Battery warning Light Problem? (Isolator equipped)***

As stated earlier, it’s difficult to give precise voltage readings because what you get depends on a lot of factors including the temperature the condition of your batteries and even the engine RPM. Even your voltmeter accuracy comes into play. The surface charge effect can confuse as well. A battery which has just been taken off charge will read a higher than normal voltage until the electrolyte reaches equilibrium. The same is true for a battery, which has been discharging at a heavy rate, when you remove the heavy load, the voltage will be “lower” than normal and return to a value based on its state of charge after a period of time.

Don't jump to conclusions with limited information.

The warning light usually indicates that the voltage at the battery is too low and the battery is not charging. The voltage needs to be least 13 volts to charge the battery. It can be low for a number of reasons:

- 1) Alternator is defective
- 2) Slipping belt
- 3) Alternator wiring problem, regulator connection and warning light circuit.
- 4) The special "starting circuit" for the alternator has failed. (Isolator equipped vehicle.)
- 5) The connection between the alternator output and the isolator is open.
- 6) Bad isolator; an open internal diode between the vehicle battery terminal and the alternator terminal or an open diode between the "E" terminal and the alternator output terminal. (Note that this diode connection is such that current can flow from the E terminal to the alternator terminal, but not in reverse.)
- 7) The connection between the isolator battery terminal and the battery is open.
- 8) Alternator is "current limited" due to excessive loads or because it's damaged.  
If the house batteries are discharged, all of the loads may be more than the alternator can deliver.

If the dash battery warning light comes on, I would first measure the voltage at the vehicle battery with the engine running to verify that the voltage is in fact low. If it is low, I would then shut off the engine and then attach a meter wire lead to the alternator output. In an "isolator equipped" vehicle, this is connected to "A" terminal on the isolator. There is an annotated picture of an isolator on page 2 of this document. If you have a battery separator, then the alternator output connects directly to the battery just like a normal vehicle. There may be an open fusible link in the wiring harness between the alternator output and the battery.

Connect the other meter wire lead to a bare metal part on the frame. This can be a challenge; you can probably find a wire attached to the chassis or connect it to the negative terminal of the battery. Use alligator clips so you don't have to hold them on. Crawling under a running vehicle to make a measurement is dangerous and not necessary. Start the engine and make the measurement. This alternator output and the battery should be connected by a diode in the isolator and if the alternator is working will be about 1 volt greater than the battery voltage when the engine is running. So if the battery is reading about 13.5 volts I would expect the alternator to read around 14.5 volts. Again the actual voltage can vary, but the difference should be about 1 volt. If the diode has failed "open" it will read much higher. In the case of an open diode between the A terminal and the vehicle battery the voltage may be 20 volts or more with the engine at idle.

Measure the house battery voltage at the isolator with the engine running, it should also be about 1 volt less than the alternator output. If it's much less, (Battery voltage more than 1 volt less than the alternator output) then that side of the isolator is bad and it's not charging the battery. Careful, because if the RV is plugged in and the converter charger is charging the battery it might be the same or more! So perform the test with the RV unplugged and the generator off. Note that the actual voltage drop is a function of how much current is being drawn by each side. With very little current, the voltage difference might be only .7 volts but as it goes up the voltage drop will increase, but should not be much more than about 1 volt. If the house battery is very low, you might see more drop than on the vehicle battery and the reverse would be true if the vehicle battery is low. The reason the isolator is so large is that this voltage drop creates lots of heat when you have high charging currents. If the alternator output is much lower than the battery voltages, this does not indicate that the isolator is bad.

If the alternator output voltage is very low or even 0 with the engine running, it may be that the special starting circuit has failed. There is a "fourth" terminal on the isolator which is connected to the wiring such that it has battery voltage when the ignition switch is in the "Run" position. This delivers battery voltage via a diode in the isolator to the alternator output. This is necessary for the alternator to "start" working. Connect your voltmeter to this fourth terminal and check for battery voltage with the ignition switch in the "run" position with the engine not running. If you don't have battery voltage here, then you need to trouble shoot this wiring. There may be a relay and a circuit breaker depending on the model. If the voltage is present and there is no voltage present at the alternator output connection on the isolator, then the diode in the isolator is open.

Caveats; the wires and connections have resistance, with a lot of current you will see voltage drops between the source of the energy and the load. So if the batteries are really low and you are drawing lots of current, the voltage at the house battery will be less than at the isolator.

There are circuit breakers between the isolator and the house battery. In my unit they are rated at 50 amps. Under heavy charging, they might open and then the battery voltage would read lower as if the isolator was bad. This is not an isolator problem and they should close after they cool off. If the house battery is really low, you should charge it by plugging into AC mains power.

Don't condemn the isolator until you are sure you are interpreting the results correctly. With the isolator disconnected, you can use an ohmmeter to check the diodes, but the best way is under load on the vehicle. Your ohmmeter may have a "diode" check function depending on the model. If this is the case, the normal ohmmeter function may not have enough voltage to switch on the diode and you may think it's open. Switch the meter leads and you should see it conduct one way and not the other. A-B1 should conduct with A more positive and B1. A-B2 should behave the same way. E-A should

conduct when E is more positive than A. B1-B2 should not conduct either way. You can use a battery operated test light to check the diodes as well.

Connecting a jumper between the alternator connection and the vehicle battery connection on the isolator essentially returns the vehicle to the typical vehicle configuration and “bypasses” the diodes in the isolator. Now the voltage at the battery and the alternator should be about the same.

It’s been reported that with a discharged house battery, the battery light may come on when running the engine. In this case, the alternator can’t deliver the high current demanded by all of the loads including the vehicle loads and the batteries. As a result the voltage falls and the light comes on. This is abnormal and the alternator is likely delivering all the current it can. The current follows the voltage, the higher the voltage, the more current the alternator delivers. Effectively it’s “browning out” because it can’t produce the power demanded at the normal voltage. The maximum current is limited by the design of the alternator.

Operating the alternator at maximum output is hard on the equipment and can lead to early failure. Under this condition, I would expect the alternator output to still be about 1 volt greater than the battery voltage indicating that it is producing power and delivering current to the loads.

Not all alternators are created equal and some produce more output than others. You could have an alternator, which appears to work, but is damaged and cannot produce full output. Roadtreks are normally equipped with a high output alternators to handle the demands. When a battery discharged, it will demand a lot of charging current, but this usually falls off fairly quickly as the battery charges.

Running batteries very low is a recipe for early failure of the batteries and perhaps other components as well.

A DC clamp on ammeter which is very useful in troubleshooting such problems. Normally to measure current you have to “break” the circuit, but with this type of meter you clamp it around the wire to measure the current. Be sure and get one which measures DC current, since they are less common than AC only clamp on meters which won’t help in DC circuits. Knowing the voltage is only half the story, the current and the voltage will help you understand the situation in much better detail.

Isolators are solid state devices and can have variable life spans. They can easily last the life of the vehicle. If they are operated very near their capacity they will get hot and heat kills electronics. Momentary short circuits can instantly open the diode in an isolator and it becomes an expensive fuse.

## **General Troubleshooting Tips**

Systems operating in failure mode can behave in very strange ways! The situation is not “normal” and the goal is to figure out why. It’s important to examine the conditions and think about the problem before blindly diving in. What combination or conditions could create the condition I am observing?

Digital voltmeters DVM are wonderful tools, but they can mislead. A voltmeter draws a tiny amount of power from a circuit. You may in fact have a very poor connection or even a “sneak circuit” which may mislead you. A 12 volt test light can be very useful because it “loads” the circuit.

The ohmmeter function of a DVM can only be used on dead circuits. At best, you won’t get the correct results and at worst, you will ruin your meter. There may be residual energy or capacitors present which can really be confusing.

Measuring a diode requires enough voltage to activate the diode, the ohmmeter function may not provide enough voltage to do this. Many DVMs have a diode check function just for this purpose.

With all the plastic, paint, dirt, corrosion etc, it can be difficult to make a connection. Be sure you really have a connection!

Most meters come with needle probes, which are fine, but you have to “hold” both of them in place to make a measurement. Don’t limit yourself to the probes; accessories like alligator clips and jumper leads can make life much easier and safer!

Yes 12 volts won’t cause a shock, but the current can burn wires can destroy components in an instant. A temporary test connection might create other problems, so consider carefully what you are trying to do.

Both voltage and current are required to do the work of lighting a lamp, running a motor or charging a battery. Knowing both the voltage and the current will speak volumes about what is really occurring. If voltage is present and current is flowing, work is being done and that work might be heat!

Measuring current in DC system usually requires that the circuit be broken to insert a current meter. A clamp-on DC amp-meter makes this unnecessary. Make sure the meter you buy makes both DC and AC current measurements.

Clamp on DC amp-meters can be fickle devices and are not terribly accurate. They are sensitive to stray magnetic fields and must be “zeroed” when you use them. They typically don’t measure small currents very well.

Make some measurements when things are operating correctly and verify that you get the results you expect.

Replacing an expensive part only to have it fail immediately because of another problem is quite annoying! So think, check and verify. Walking away from the problem for a few minutes or hours can work wonders.

## **Closing Comments:**

I have spent more time on this than I should, but it's like working a puzzle, it's fun, but there are other chores I need to be addressing. I will be happy to add features as time permits and I will fix any bugs promptly if they are brought to my attention.

Let me know what you think and if you have any suggestions for improvements.

John Slaughter  
john@pochiro.com  
2002 190V Chevy

## **Revisions**

8/9/15 Made extensive changes to clarify some of the wording and corrected some of the typos. Please report any errors and I will get them fixed.

6/12/13 Made changes to wording about the bypass mode and direct connections. Thanks to Cecil Hayes for the suggestion. Changed the battery type to Group 27M and adjusted the run time at 5 amps. Added some notes about clamp-on amp-meters. Expanded notes on the Onan oil level sensor.

12/15/12 Added notes about the Onan generator and corrected a comment about the generator battery charger. Added some reference links for the Onan generator. Removed an erroneous battery capacity value. Some minor cleanup of the text. Fixed a bug on the simulator so it now displays the converter instability message when the generator is started or the AC mains power connected with the battery disconnect off for direct configurations.

11/29/11 Cleanup of the document and some additional troubleshooting notes.

11/28/11 Modified the simulator to display a warning if the battery switch is held down too long. Changed the logic to always display a warning for direct connected configurations when connecting to AC mains power with the battery switch off. Added a warning in the text about holding the buttons down. Added a discussion about the Trip-Lite configuration. Some cleanup of the text.

5/30/10 Added a discussion about battery warning light and isolator diagnostics.

5/29/10 Updated the Notes

4/30/10 General release after user review.

4/19/10 Fixed a bug where inverter would not discharge RV battery with the switch on and low voltage on one of the configurations. I'm not sure how much current it will draw under this condition, but leaving the inverter switch on will drain the battery on the bypass configuration. Added a note to the screen about voltages to avoid confusion about absolute values.



4/18/10 Major revisions to the notes and corrected the simulator to reflect the four configurations described. Added battery monitor panel display function.

4/5/10 Fixed a bug where the converter trace would show red with no voltage.

4/1/10 Changes added to provide for direct connection of converter/charger/inverter to the battery.

3/4/10 Added logic to model the behavior of the Battery Separator equipped vehicles.

3/16/09 Corrected a few minor errors in the notes.

3/15/09 Moved all of the buttons to the left side so users won't miss them if they are using a small screen size. Corrected a bug in the way the inverter switch works. The switch state did not reflect the state table because of the message. Now the state table can only change if the inverter can be turned on.

2/22/09 Fixed the style so the text can be made larger easily. Corrected a problem with the alignment so the simulator will work correctly with FireFox and Safari.

2/21/09 Added "voltage" readouts at various points in the diagram as an indication of possible readings under various conditions.

2/13/08 Clarified battery charging under generator operation. Modified the simulator to display alerts explaining why an action did not have the expected result. Fixed a bug which did not reflect the proper switch status if the user moved the mouse pointer off while holding the button down.

2/4/08 Removed sound effects so application will load faster. Changed the 12 volt on graphic to show the function of the red light on the monitor panel. Made a few changes to clarify the explanations.